

# Photo Album for Burton, SC

## Job 23448

### August 13, 2010

This week the cab began the paint process with metal finishing and priming and was nearing completion. The pump house completed fabrication while the body began fabrication. Next week the cab should finish in paint and begin on the cab line where cab related content is added. The chassis frame should begin assembly. The pump house should have trim added and the body should finish fabrication and may begin the paint process.



DSC06005



DSC06006



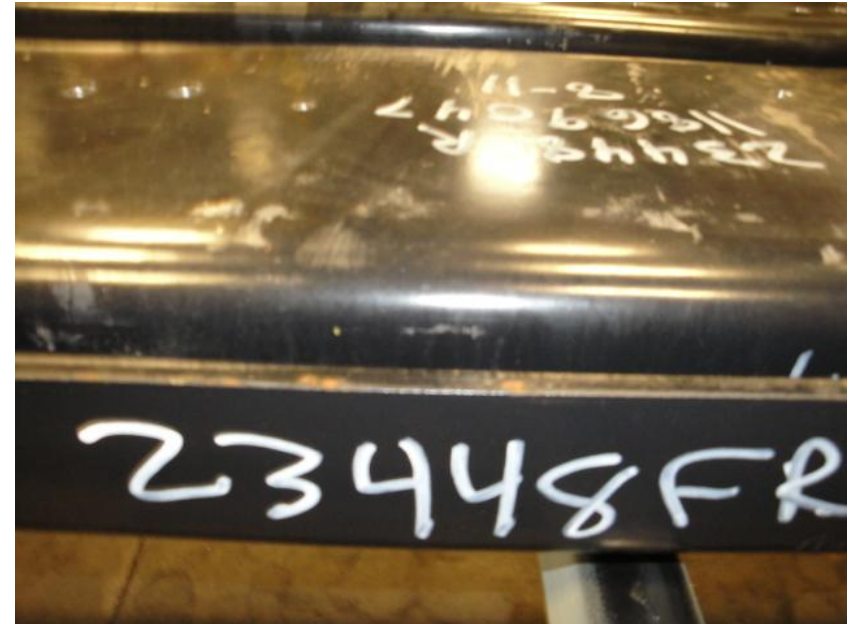
DSC06007



DSC06008



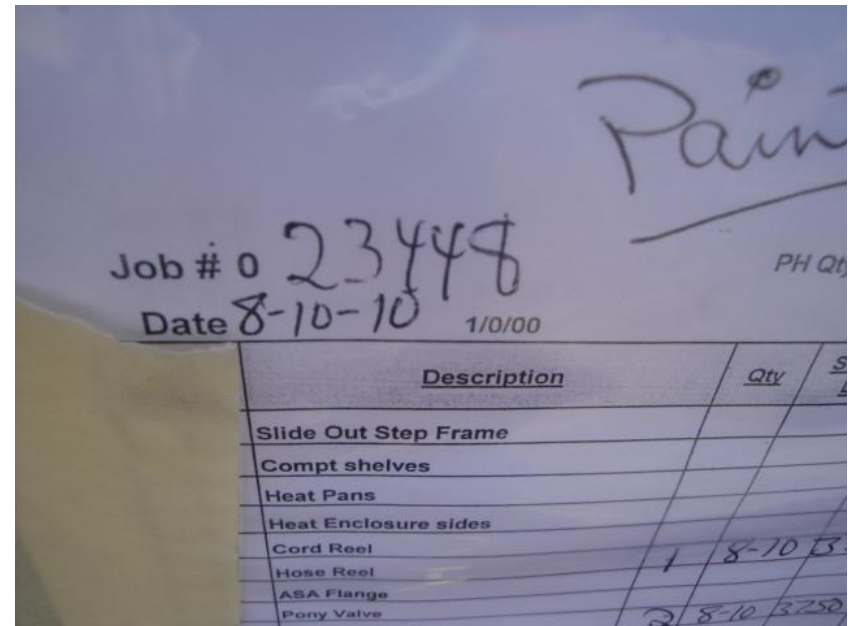
DSC06009



DSC06180



DSC06181



DSC00016



DSC00017



DSC00018



DSC00019



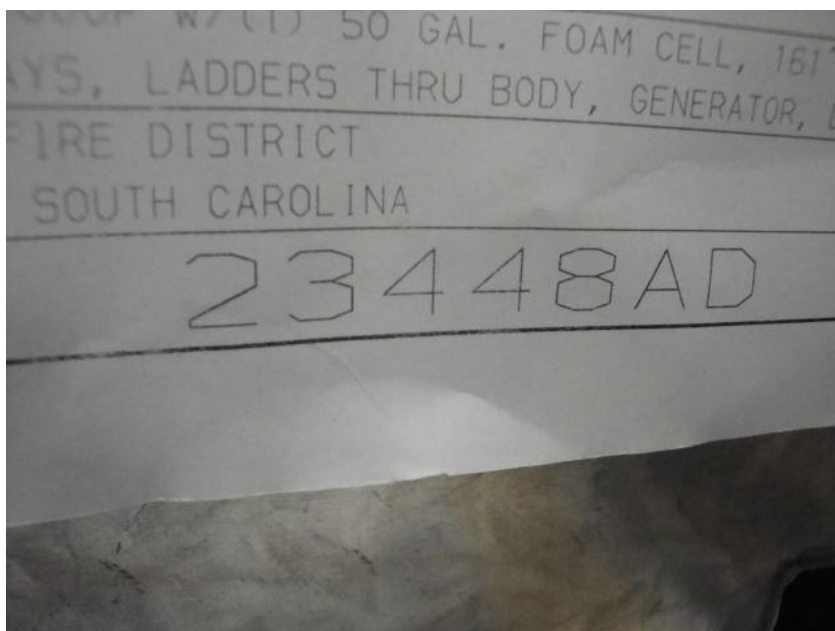
DSC00020



DSC00021



DSC00022



DSC00059



DSC00060



DSC00061



DSC00062



DSC00063